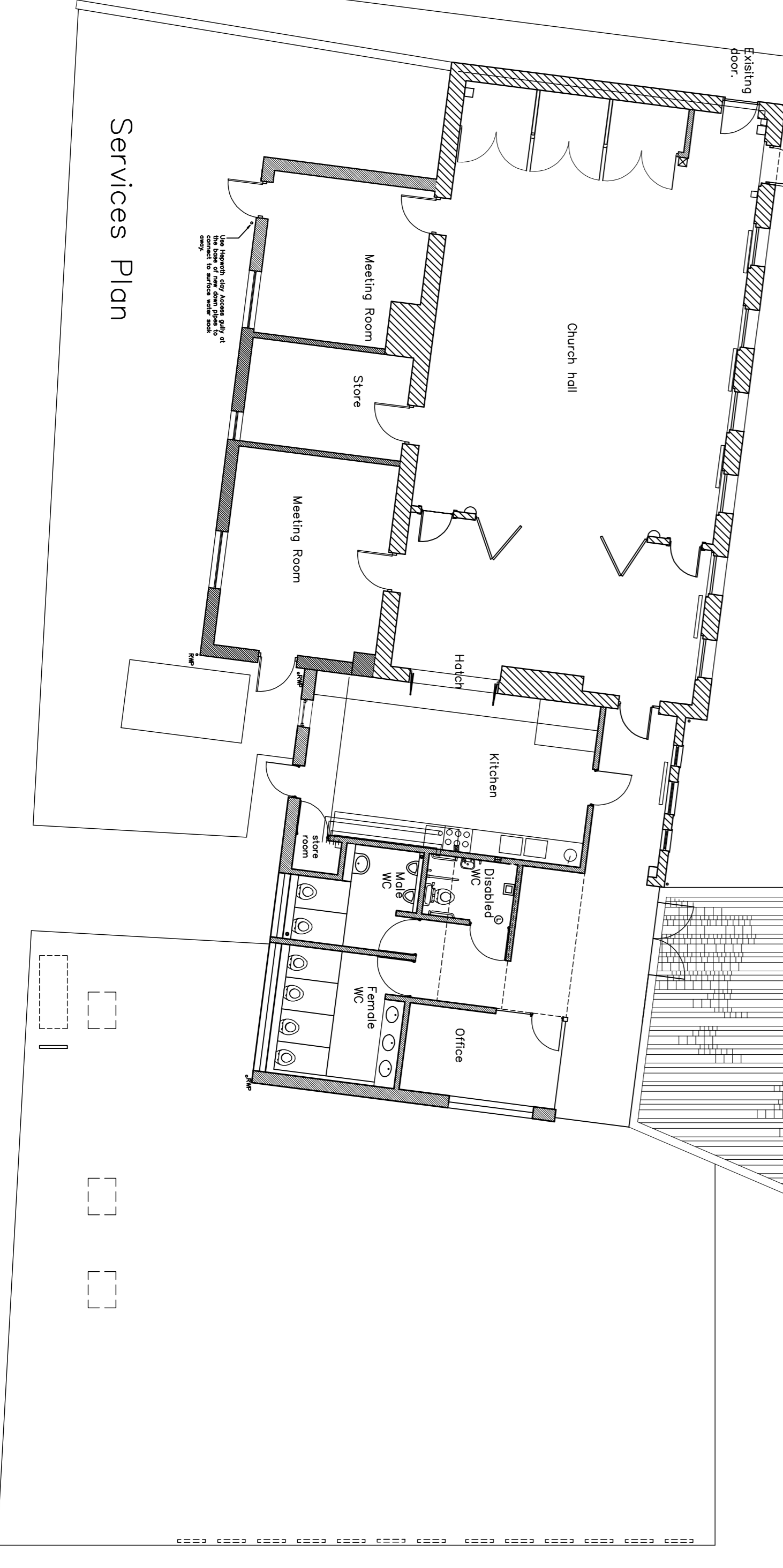
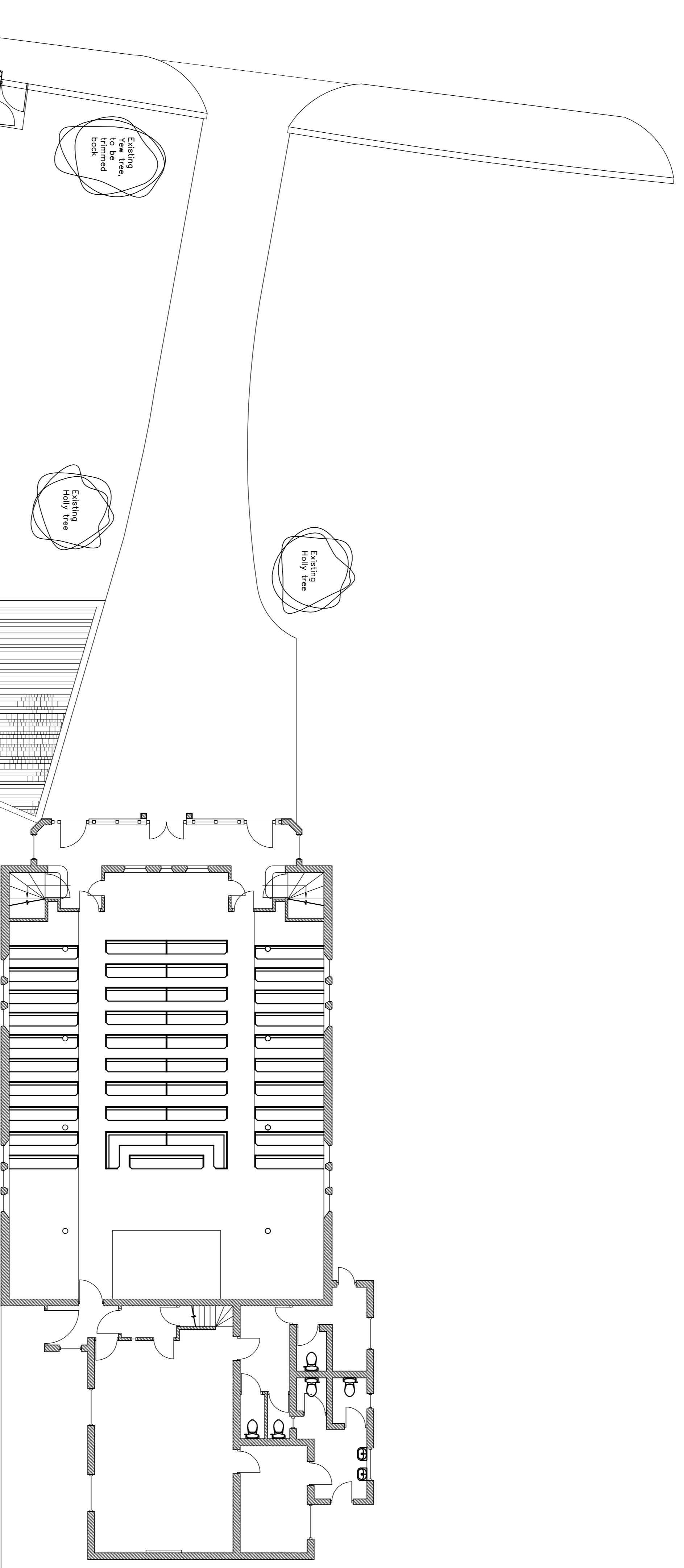
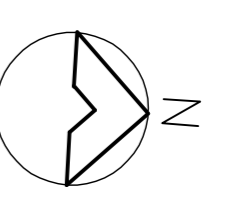
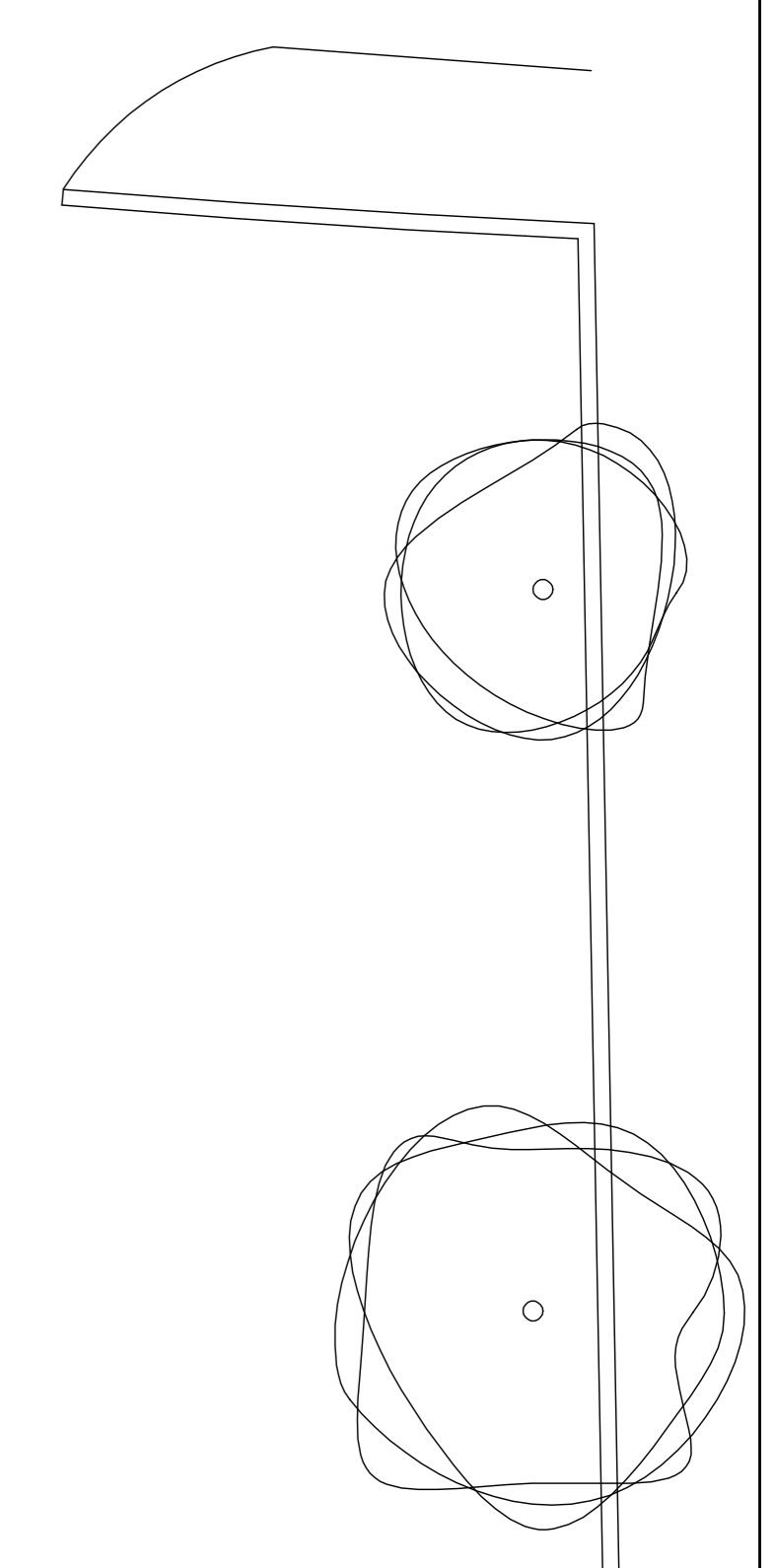


NOTE 1
 Do not scale from this drawing. Confirm all dimensions on site. Refer any discrepancies to the Architect before work is put in hand. Read this drawing in conjunction with the relevant sections of the specification, schedule of works and other drawings.

External storage shed



Revision J - General alterations - Apr 09
 Revision I - General alterations - May 08
 Revision H - General alterations - August 05
 Revision G - General alterations - August 05
 Revision F - General alterations - August 05
 Revision E - General alterations - May 05
 Revision D - General alterations - May 05
 Revision C - General alterations - May 05
 Revision B - Entrance doors moved - May 05
 Revision A - Window to store added - April 05

WCP **Church Architects and Interiors**
 18 Essex Street,
 King's Cross,
 London, EC2A 4PU
 Tel: 01224 760421
 Fax: 01224 760422
 Email: info@wcp.co.uk
 Website: www.wcp-architects.com

Client: Minister & Deacons
 Job Title: Bluntingsham Baptist Church

Drawing Title: Services plan

Scale	Drawn By	Date
1:100	MC	April 2005
Job No.	Drawg No./Rev.	Checked by:
C354	AB10/1	